



CONTENTS

WELCOME TO SOTA	2
BEFORE USING	2
LEARN MORE	2
COMPLETE UNIT INCLUDES.....	2
DO NOT USE.....	3
CAUTIONS	3
SUMMARY OF LIGHTS	3
HOW TO USE THE BIO TUNER.....	4
How it Should Feel.....	6
Typical Use.....	6
Changing the Conductive Rubber Electrodes.....	7
OUTPUT OF SIX MODES	7
ELECTRICAL SPECIFICATIONS	8
Power Requirements.....	8
Optional Power Input.....	8
Output Specifications.....	8
TROUBLESHOOTING	9
COUNTRIES THAT PARTICIPATE IN MANUFACTURING	9
REPLACEMENT ACCESSORIES	9
WARRANTY.....	9
REPAIRS.....	9

WELCOME TO SOTA

Thank you for allowing us to be a part of your wellness team.

The Bio Tuner is a consumer product designed to be used as part of a Wellness Lifestyle. A commitment to healthy lifestyle choices is an important factor in the journey to Wellness.

The SOTA Bio Tuner supports the mind-body connection by offering harmonic frequencies that help create an inner sense of calm, balance and tranquility.

The Bio Tuner is designed to be used independently, but can also be used together with any of the SOTA Products.

With proper care, your Bio Tuner should provide you many years of trouble-free use. Please understand that results will vary.

BEFORE USING

Please read the manual thoroughly before using your Bio Tuner. For the most up-to-date manual, please visit our website www.sota.com/manuals.

We've made every effort to ensure the information in your manual is up-to-date at the time of printing ... since that time however, new information may have become available.

LEARN MORE

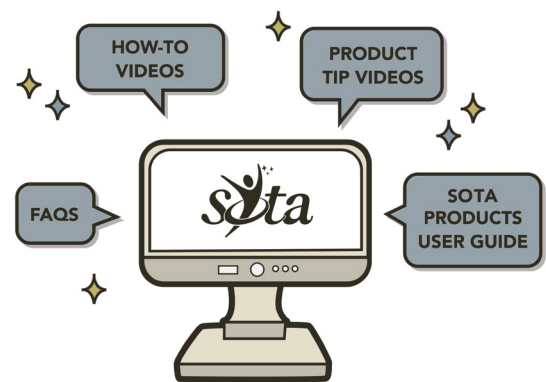
To learn more about the Bio Tuner we invite you to visit the SOTA website:

www.sota.com

The website offers How to Videos, Frequently Asked Questions, *The SOTA Products User Guide*, SOTA News ... and more.

COMPLETE UNIT INCLUDES

- One (1) Bio Tuner Unit
- One (1) Pair of Ear Clips
- Two (2) Pair Conductive Rubber Electrodes
- One (1) Cord
- One (1) Arm Band and Clip





- One (1) 9-Volt Alkaline Battery
- One (1) Carrying Case
- One (1) Product Manual

DO NOT USE

1. Do not use in the following situations as safety has not been explored:
 - a. In the case of pregnancy.
 - b. With an implanted device such as a pacemaker, etc.
2. As with all electrical products do not use near water, when driving a car or when operating heavy equipment.
3. Do not:
 - a. Suddenly increase the intensity to the maximum level. The intensity should be increased gradually to a comfortable level to ensure safety.
 - b. Connect the Bio Tuner Cord to any other USB outlet, such as a computer or power supply. Do not plug any other USB connections into the Bio Tuner, other than the Bio Tuner Cord.

CAUTIONS

1. If you are on psychiatric medication, have a neurological condition or seizures, please consult your health care provider prior to using the Bio Tuner.
2. If you experience an increase in tinnitus or ringing in the ears, please discontinue use.
3. If you experience headaches or nerve pain when using the unit, please discontinue use.
4. While this technology is generally considered safe, there exists potential for rare individual reactions that cannot reasonably be foreseen. Therefore, your use of the SOTA Products constitutes your agreement that you are responsible for your decision to use the technology and that you hold SOTA harmless for any injuries or damage believed to arise from using the SOTA Products.

SUMMARY OF LIGHTS

GREEN: Indicates which Mode is selected.

RED: Indicates the battery is low and will soon need replacing.

YELLOW: Used for testing to ensure the flow of current through the Unit, Cord and Ear Clips.

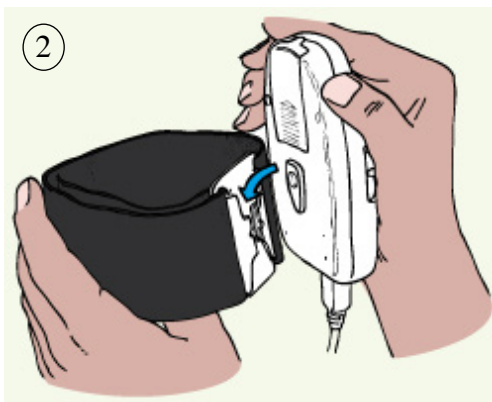
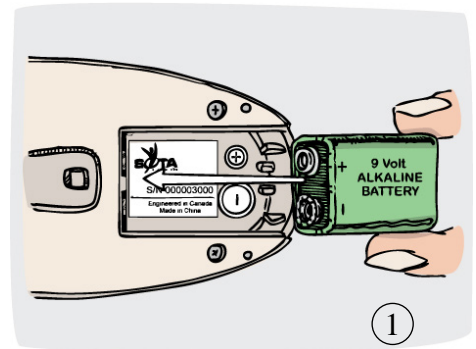
HOW TO USE THE BIO TUNER

1. Place the 9-Volt Alkaline battery in the unit.

- a. On the back of the unit, slide off the battery cover.
- b. Position the 9-Volt Alkaline battery so the positive (+) and negative (-) terminals line up as in image 1.

Note: The smaller circle on the battery matches the smaller circle in the case ... the larger battery circle matches the larger circle in the case.

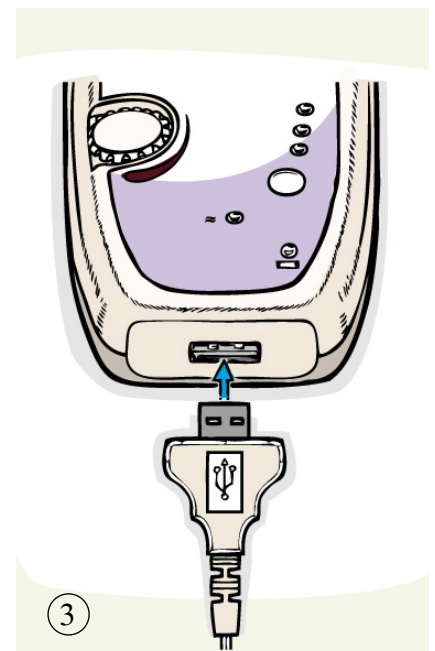
- c. Slide the 9-Volt Alkaline battery into the case and push down.
- d. Slide the cover back onto the unit.



2. Clean the ear lobes to eliminate skin oils. This will allow for better conductivity.

3. Slide the clip on the back of the Bio Tuner into the holding clip on the Arm Band as in image 2.

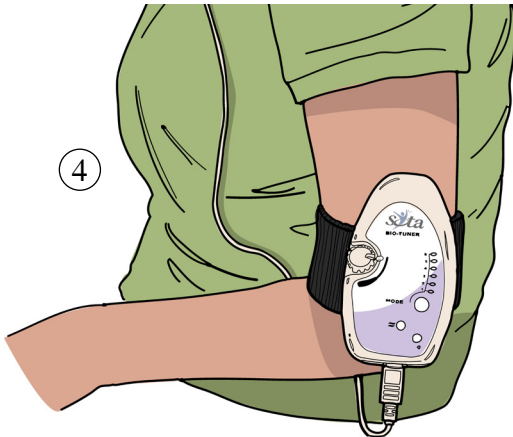
4. Insert the cord into the jack on the unit as shown in image 3. The USB symbol on the plug should be facing up as shown. When the plug is positioned correctly, it will slide in gently. Do not force.



5. Slide the Arm Band, with the unit and cord, up the arm to a comfortable position. Tighten the band to secure it in place as in image 4 on page 5.

Option: If preferred, the unit can be placed in a pocket.

6. Insert the pins on the cord into the Ear Clips.
7. Wet the conductive rubber on the Ear Clips with water or conductive gel.
8. Place one Ear Clip on each ear lobe, positioning the Ear Clip with the conductive rubber at the back of the ear lobe



and close to the jaw as in image 5.

9. Turn the unit ON by turning the ON/OFF switch clockwise.

All the lights will flash once and the unit will beep, before starting the unit in Mode 1. If the lights do not come on, the battery may not be placed correctly.

10. Gradually turn up the intensity to a comfortable level. The intensity should be comfortable. See 'How It Should Feel' on page 6.

11. Change modes by pushing the Mode button. The GREEN light indicates which Mode is selected and that the timing has started. See Mode information on page 7.

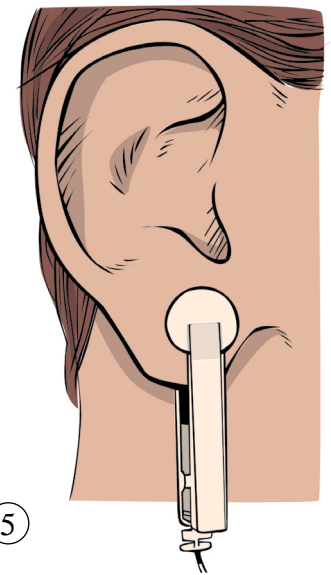
12. The unit will beep twice when the 20-minute timed session has ended. The unit will automatically cycle into Sleep Mode and the GREEN Mode light will flash every 2 seconds.

a. While in Sleep Mode, the battery is still being used. To save your battery, turn the unit OFF.

b. To turn the unit OFF, rotate the ON/OFF switch counter clockwise until it clicks. Do not force the ON/OFF switch past its natural stopping point.

13. To do additional sessions, the unit will need to be turned off and restarted as per step 9. Wet the Ear Clips between each timed cycle.

14. Unplug the Cord. Do not store the unit with the Cord plugged in as this can damage the Cord.



Notes:

Ear Clips: The Ear Clips may feel more comfortable with the use of either a conductive gel or aloe vera gel rather than water. Over time, the Conductive Rubber Electrodes in the Ear Clips may lose their conductivity and will need to be replaced.

Changing Modes: When the Mode is changed during a timed session, the timing continues without interruption to complete a session of approximately 20 minutes.

Output: The YELLOW light is used to test the output of the unit. During normal operation, when the unit is turned ON and the Ear Clips are positioned correctly, the YELLOW light may or may not come on. As long as the current is felt, the unit

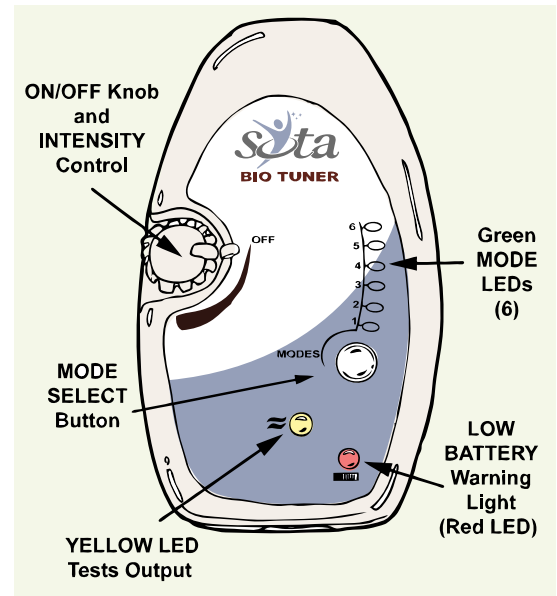
is operating correctly, regardless of the YELLOW light.

Care of Bio Tuner Cord and Ear Clips:

Occasionally, remove the conductive rubber from the Ear Clips to clean in a mild soap solution. Rinse thoroughly. If necessary, gently wipe the metal pins of the Bio Tuner Cord.

Low Battery Warning: The RED light comes on and the unit will beep when the battery is low. This means the battery will soon need to be replaced.

Replacement Batteries: When purchasing replacement 9-Volt batteries, take the Bio Tuner with you to ensure a proper fit, as 9-Volt batteries vary in size.



HOW IT SHOULD FEEL

1. The sensation is a pleasant buzzing. It is not necessary to turn the control up to an uncomfortable level. If it feels prickly or unpleasant, check the following:
 - a. Wet the conductive rubber of the Ear Clips again.
 - b. Apply conductive gel or aloe vera gel to the ear lobes.
 - c. Clean the Conductive Rubber Electrodes.
 - d. Replace the Conductive Rubber Electrodes.
2. With repeated use, the buzzing sensation may not be felt as much. The intensity may be turned up if desired.
3. You may feel a sensation on one side more than the other.
4. In rare instances, some individuals may not feel the current.

TYPICAL USE

Length of session: One cycle is timed for ~20-minutes. One session can be 1 to 2 cycles (20 to 40 minutes).

The unit can be used daily for up to 3 sessions spaced throughout the day. It often takes at least 30 consecutive days of use to experience benefits.

Length of Use: The SOTA Products User Guide available at www.sota.com/spug offers suggestions for Focused, Basic and Ongoing Wellness Plans.

General Guideline: The unit should be used daily, for a minimum of 4 weeks or longer. After benefits have been achieved, simply use the unit as needed.

Intensity Level: The intensity should always be set to a comfortable level. Be sure to reduce the intensity before changing modes. After the new mode is selected, readjust the intensity.

Sensitive skin: During the first weeks of use, the skin may become irritated. Over time, irritation usually decreases or disappears. Apply a healing lotion after use if the ear lobes become red or irritated.

Drink plenty of water: It's important to drink enough water when using the unit. Drinking ozonated water is especially helpful.

Stop Gradually: Reduce the amount of time each day for the last week of use.

CHANGING THE CONDUCTIVE RUBBER ELECTRODES

1. Remove the Ear Clips from the Cord.
2. Gently pull the black Conductive Rubber Electrodes out of the Ear Clips.
3. Insert the new Conductive Rubber Electrodes into the Ear Clips. Press the Electrode into place.

OUTPUT OF SIX MODES

The Bio Tuner provides six different Modes with which to experiment and discover what feels or works best. Try different Modes to determine which feels most comfortable.

One Mode is not considered more beneficial than another.

In all Modes, the base frequency of 1,000 Hz pulse-modulated by 111.11 Hz is present. Modes 4, 5, and 6 may have a more gentle feel.

See Table of Modes on page 8.

BIO TUNER MODES

MODE 1-3 (550 uS pulse width)

Mode 1: 1,000 Hz modulated by 111.11 Hz,
Output = Continuous

Mode 2: 1,000 Hz modulated by 111.11 Hz,
Output = 1 Second ON, 1 Second OFF (0.5 Hz)

Mode 3: 1,000 Hz modulated by 111.11 Hz,
Output = Amplitude Modulated by 7.83 Hz Schumann (Earth) Sine Wave

MODE 4-6 (220 uS PULSE WIDTH)

Mode 4: 1,000 Hz modulated by 111.11 Hz,
Output = Continuous

Mode 5: 1,000 Hz modulated by 111.11 Hz,
Output = 1 Second ON, 1 Second OFF (0.5 Hz)

Mode 6: 1,000 Hz modulated by 111.11 Hz,
Output = Amplitude Modulated by 7.83 Hz Schumann (Earth) Sine Wave

ELECTRICAL SPECIFICATIONS

POWER REQUIREMENTS

Use a 9-Volt Alkaline battery for proper operation.

OPTIONAL POWER INPUT

The Bio Tuner can also be operated using rechargeable batteries. When purchasing rechargeable batteries, it is suggested to take the unit with you to ensure the batteries will fit the enclosure.

OUTPUT SPECIFICATIONS

Maximum <math><1.5\text{mA}</math> Peak ~40 Volts Peak-Peak into typical 4k ohm load. Minimum <math><10\text{uA}</math>, 10 Volt Peak-Peak at lowest setting. Output impedance ~20k ohm.

1,000 Hz (+/- 1%) pulse-modulated by 111.11 Hz (+/- 1%). Waveforms are Quartz Crystal-Controlled for precise frequency output. There is also a broad range of harmonic frequencies delivered in each pulse as observed on a frequency domain spectrum analyzer.

Pulses are an alternating current (AC) output with no direct current (DC) or offset bias. Output is transformer coupled so that no DC can appear at electrodes.

TROUBLESHOOTING

A Troubleshooting Guide for the Bio Tuner is available at www.sota.com/manuals. This Guide is a great tool to check if you are experiencing any issues with your unit.

COUNTRIES THAT PARTICIPATE IN MANUFACTURING

The manufacturing of the SOTA Products is a global collaboration. The following countries have participated in the making of the Bio Tuner (listed in alphabetical order): **Canada, China, Hong Kong, Malaysia, Taiwan, Thailand and the USA.**

REPLACEMENT ACCESSORIES

To replace your accessories, contact your supplier.

WARRANTY

The Bio Tuner Model BT9 is covered by a three (3) year limited warranty. Please keep proof of purchase. Warranty is void if the failure is due to abuse or negligence. SOTA reserves the right to make changes to the Bio Tuner without obligation.

REPAIRS

Please contact your supplier for return instructions. For information about your closest repair depot, contact repairs@sota.com or call 1.250.770.2023 or 1.800.224.0242 (toll-free in Canada & USA).



Made in China. Designed and Engineered in Canada.